



Ballina Headlands
Leisure Park

Price List for 2009

1800 181 208

Prices Effective until
30/1/2010

	LOW SEASON except weekends		WEEKEND Fri & Sat nights, & Long Weekends (NSW or QLD)*	EASTER (Min 5 Nights) 9/4/09-14/4/09	SHOULDER (Min 3 Nights) Splendour & Gromfest 12/12/09-19/12/09 10/1/10-26/1/10	CHRISTMAS PEAK (Min 7 Nights) 19/12/09-10/1/10
Superior 2 Bedroom Cabin/ Superior 2 Bedroom Spa Cabin: Sleeps 5-6 Spacious 2 bedroom cabins. Queen bed, 2 x 2 bunks or queen with bunk over, all linen, pillows & blankets/duonas supplied. Ensuite (2 with spas, 2 with baths). Fully equipped kitchen, 2 door fridge and gas stove. Flat Screen TV & DVD. Deck with outdoor furniture. Reverse Cycle A/C. (varied plans) 4 star rated	<i>NIGHTLY</i>	<i>WEEKLY*</i>	<i>NIGHTLY</i>	<i>5 NIGHTS</i>	<i>NIGHTLY</i>	<i>WEEKLY</i>
	\$125	\$800	\$145	\$1250	\$145	\$1750
SUPERIOR CABIN PRICES BASED ON 2 PERSONS. Extra persons (includes linen): \$16.00 per night per person (ages from 12months)						Extra persons: \$16.00 per night
Deluxe Disabled Access Cabin: Sleeps 4. 4 star rated Queen bed in separate bedroom, linen supplied. Double bunks in kitchen/living room. (No bedding). Spacious ensuite with shower seat & rails. Fully equipped kitchen ,2 door fridge & gas stove. TV & DVD. Deck with outdoor furniture & ramp access. A/C.	\$100	\$630	\$115	\$1000	\$115	\$1400
Deluxe Spa Cabin: Sleeps 5. Queen bed in separate bedroom, linen supplied. Triple bunks (no bedding) in kitchen/living room. Ensuite with spa. Fully equipped kitchen , 2 door fridge & gas stove. TV & DVD. Deck with outdoor furniture. A/C. 3.5 star rated	\$96	\$605	\$110	\$960	\$110	\$1344
Deluxe Cabin: Sleeps 5 Queen bed in separate bedroom, linen supplied. Triple bunks (no bedding) in kitchen/living room. Ensuite. Fully equipped kitchen, 2 door fridge & gas stove. TV & DVD. Deck with outdoor furniture. 3.5 star rated	\$88	\$555	\$103	\$880	\$103	\$1232
Ensuite Cabin: Sleeps 2-5. Open plan cabin. Double bed, double bunks, (no linen,pillows or blankets supplied) ensuite, basic kitchen with cooktop, grill & 2 door fridge. TV. Some outdoor furniture. (Varied plans) Not star rated	\$70	\$440	\$85	\$700	\$85	\$980
DELUXE & ENSUITE CABIN PRICES BASED ON 2 PERSONS. Extra persons (no linen) Adult \$15.00 per night/\$90.00 per week Children \$7.00 per night/\$42.00 per week (ages 1-16)						A \$84.00 C \$42.00
Ensuite Caravan/Tent Site Powered: Large grassed/concrete annex slab. Individual sullage & taps. TV aerial connection. One dwelling per site. Single Night \$42	\$36	\$228	n/a	\$290	\$45	\$400
Powered Van/Tent site: Large grassed/concrete annex slab & TV aerial connection on most van sites. Individual sullage & taps. Full use of camper's kitchen, BBQ's, TV & stove. One dwelling per site. Drive-thru sites for overnight stays. Dump point.	\$30	\$188	n/a	\$200	\$35	\$300
Tent Sites: Large grassed sites. Full use of camper's kitchen, BBQ,TV,Fridge & Stove. One dwelling per site.	\$27	\$176	n/a	\$200	\$32	\$300
SITE PRICES BASED ON 2 PERSONS						A \$84.00 C \$42.00
Extra persons Adult \$12.00 per night/\$72.00 per week Children \$6.00 per night/\$36.00 per week (ages 1 -16)						

Booking Conditions:

- Weekly rates** only apply if booked and paid for prior or upon arrival, and also for extensions within 24 hours of arrival, depending upon availability.
- Weekend rates apply** for Friday and Saturday nights, also* Long Weekends (minimum 3 nights)

Extra Fees:

Linen Hire: \$15 per bed or charged per item
Extra Vehicle Charge: \$5 per day
Visitors (Using Pool): \$4 per person
 \$13 per family

Ballina Headlands Leisure Park

35 Skennars Head Road

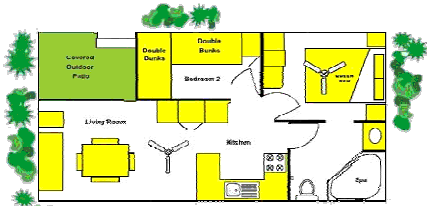
Ballina NSW 2478

Ph: 02 66877450

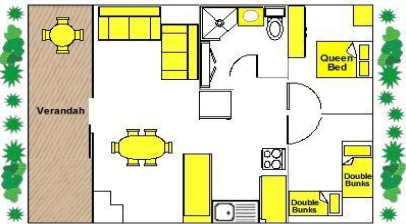
Reservations Only: **1800 181 208**



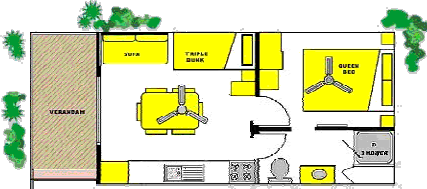
Cabin floor plans



Superior 2
Bedroom Spa
Cabin



Superior 2
Bedroom
Cabin



Deluxe Cabin

Floor Plans serve as a guide only, actual configuration may vary. See our website for further plans. www.ballinaheadlands.com.au



Park Features

- Solar Heated Pool & Wading Pool
- Hot Spa
- Games & TV Room
- Playground
- Undercover BBQ area & Camp kitchen
- Public Phone
- Laundry & Kiosk
- Internet Kiosk
- 15 Minute walk to beach



Ballina Headlands Leisure Park

NRMA Rated



Our Location



www.ballinaheadlands.com.au

Email: info@ballinaheadlands.com.au